

SM SOUTH



Values

We care about ALL students.

Beliefs

We believe ALL students can and will learn.

Vision

All means ALL! Personalized Learning for ALL students.

Hard-Hat Hero

Staff member of the week

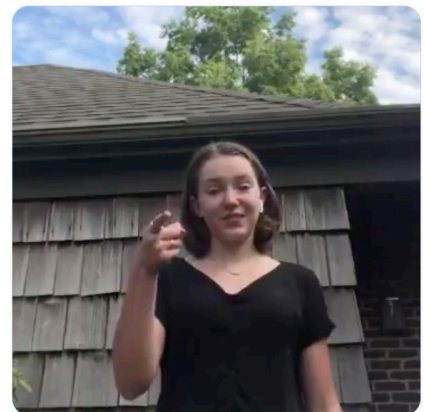
Bri Miller



Tweet of the Week!



SMS Sign Language Club @sms1slc · 5d
Learn how to sign, "nice to meet you!", in sign language!



Follow Dr. Dain @SMSouthTDain

Brianna Miller serves as an English teacher at SM South, and was nominated by a colleagues: "I shot off an email to Brianna Miller, just touching base about the coming year and the sections of English we are slated to co-teach. Ashley told me Brianna was VERY ORGANIZED, but holy smokes! She is phenomenally organized. As a SPED teacher, this is such a gift and lets me collaborate with her so much more effectively and will allow me lots of time to create accommodations that are thoughtful and polished!" Thank you Ms. Miller for all you do at South!

Email Dr. Dain to nominate a South staff member for the Hard Hat Hero Award

SHAWNEE MISSION SOUTH CALENDAR

MONDAY	TUESDAY	WEDNESDAY	THURSDAY	FRIDAY
AUG 10 Building OPEN by appointment Only	AUG 11 Building OPEN by appointment Only	AUG 12 Building OPEN by appointment Only	AUG 13 Building OPEN by appointment Only	AUG 14 Building OPEN by appointment Only
AUG 17 Fall Sports Begin! Building OPEN by appointment Only	AUG 18 Building OPEN by appointment Only	AUG 19 Building OPEN by appointment Only	AUG 20 Building OPEN by appointment Only	AUG 21 Building OPEN by appointment Only
AUG 24 Building OPEN by appointment Only	AUG 25 Building OPEN by appointment Only	AUG 26 Building OPEN by appointment Only	AUG 27 Building OPEN by appointment Only	AUG 28 Building OPEN by appointment Only
AUG 31 Building OPEN by appointment Only	SEPT 1 Building OPEN by appointment Only	SEPT 2 Building OPEN by appointment Only	SEPT 3 Building OPEN by appointment Only	SEPT 4 Building OPEN by appointment Only
SEPT 7 LABOR DAY	SEPT 8 1st Day of School Grade 9 & 12 Only	SEPT 9 1st Day of School All grades	SEPT 10	SEPT 11



JOIN SM SOUTH PTSA TODAY!!

<https://shawneemissionsouth.new.memberhub.store/store>

Questions: Tania Schmierer Knust 816.729.0780

Building Access Update: Currently, access for students & parents is restricted and limited to the office by appointment only. If you need to return textbooks, calculators, MacBooks, etc. the main entrance doors will be open for drop off starting Monday, August 3rd.

Yearbooks: If you were unable to pick up your yearbook, you will have another opportunity on Wednesday, August 12th 10:00am-2:00pm and 5:00-7:00pm.

Payment / Registration 20-21: Due to COVID 19, we will NOT host a Registration Day. Most students including freshman will already have their laptops and we will plan to take their yearbook/ID photos upon their return to school. Families are strongly encouraged to pay fees online. With the delayed start and 2 different learning options, all fees will be adjusted accordingly, so pending board approval, the target date for the online fee payment portal to go live is **August 17**.

Given current health guidance, we are only able to accept fee payments remotely. Families will have 3 options for paying fees:

- 1) Register/Pay online:** www.smsd.org/families/pay-fees
The target date for the online fee portal is August 17.
- 2) Mail-in your payment along with registration form on the following page.**
- 3) Payment plans / arrangements can also be made by e-mailing our bookkeeper, Sharon Anderson at soanders@smsd.org.**

- Kansas State High School Activities Association requires a **Pre-Participation Physical Evaluation** (PPE) annually and shall not be taken earlier than May 1 preceding the school year for which it is applicable. See below the required documents for you to download and return the South Athletic Office.
- The PPE/Concussion/Transportation form must be on file in the athletic office before an athlete may participate. The PPE should be taken to your healthcare professional to be completed. ***New for 2020, two signatures by the healthcare professional are required.**

All pages must be completed.

- [2020-2021 Pre-Participation Physical Evaluation \(PPE\)](#)
 - [2020-2021 PPE \(Spanish\)](#)
 - [2020-2021 SMSD Concussion/Head Injury Release Form](#)
 - [2020-2021 Transportation Release Form](#)
- In addition to the physical forms, athletes and their parents/guardians are required to complete the High School Packet found online in [Skyward](#). These forms must be completed by the student athlete's first day of tryouts. If either parent/guardian or student have issues with Skyward, please contact the counseling office.



SPORTS PHYSICAL TURN IN OPTIONS



Drop off MAIN GYM LOBBY - DO NOT PARK

Monday, August 10th 11:00am – 12:00pm

Tuesday, August 11th

7:15am-8:15am and 11:00am – 12:00pm

Wednesday, August 12th

7:15am – 8:15am and 11:00am – 12:00pm

Thursday, August 13th 11:00am – 12:00pm

Friday, August 14th 11:00am – 12:00pm

or

FAX to 913-993-1490

SCAN TO karenwagner@smsd.org



Follow @counselingSMS on twitter and/or

Follow on Facebook "Shawnee Mission South Counseling"

- The Counseling Office is virtually open at this time. Please email your counselor with questions/concerns.
- Are you Moving? Please fill out the [SMS Withdrawal Form](#) if your child will not be attending SMS in the fall. Does not include 2020 graduates.
- The student must fill out the [Schedule Change Request Form](#) if he/she wants to adjust his/her schedule requests for the upcoming school year. Schedule change requests are only considered if the student meets one of the requirements stated in the form. The last day to request a change is **August 31st**. Student Schedules will be viewable early September.
- Free [Pick Up and Go Meals](#) are available through **August 21st**. **DATE CHANGE** Children must be present at pick up. Meals are available for all children ages 1-18.
- Email susanwalter@smsd.org for all Transcript requests. **Final transcripts for the Class of 2020 were sent out the 1st week of June. DELETE**
- Visit [Johnson County Mental Health Center](#) and [Johnson County Family Resources](#) for family/adolescent supports.
- Recursos en Español- [GKCHC recursos El Centro JoCo Salud Mental- se habla Español](#)
- As always, in the case of a mental health emergency call 911. Siempre, en caso de una emergencia de salud mental llama 911.

Updates From the Health Office

Stop the Spread of Germs

Help prevent the spread of respiratory diseases like COVID-19.





WHY BLOOD STEM CELL TRANSPLANTS ARE SO IMPORTANT - ESPECIALLY IN MINORITY COMMUNITIES

23%

African-American

41%

Asian

46%

Hispanic

Patients are most likely to match an adult donor of their own ethnic background. In 2019, almost 10,000 people did not receive a life saving treatment.



These transplants can treat over 70 diseases, including leukemia, sickle cell disease, and many inherited immune disorders.



Donation is free and easy. Be The Match covers travel, meals, and hotel for you and a guest.

**YOU CAN HELP US BY REGISTERING TO DONATE
BLOOD STEM CELLS AND SAVING A LIFE.**



REGISTER NOW

WWW.BETHEMATCHFOUNDATION.ORG/GOTO/DJEAGLE



Pandemic EBT

While schools are closed due to COVID-19, families with children age 5-18 who received free or reduced-priced meals from August 2019-May 2020 will receive up to \$291 per child in Pandemic EBT (P-EBT) benefits to purchase food. This benefit is in addition to any other services families are currently receiving.

How will families receive their P-EBT benefits?

Most families with eligible children recently or currently participating in Food Assistance, Child Care or TANF (cash assistance) programs will automatically receive the one-time benefit to their EBT card in the next few weeks.

Families not actively participating in these programs, but whose children receive free or reduced-price meals will be mailed a Kansas Benefits Card with benefits pre-loaded in the next few weeks. If these families do not receive a Kansas Benefits card by **June 5th**, they may need to provide additional information to DCF. These families should watch for a confidential weblink provided by their school district.



Use it like a debit card.

Families will receive the P-EBT benefit on a Kansas Benefits Card. This card functions like a debit card and can be used to purchase eligible food items at EBT authorized retailers. Non-food items *may not* be purchased with this card.

Questions?

Call 1-888-369-4777 for help.

Kansas will continue to comply with civil rights requirements, including providing equal access to individuals with disabilities and individuals who are limited English proficient.